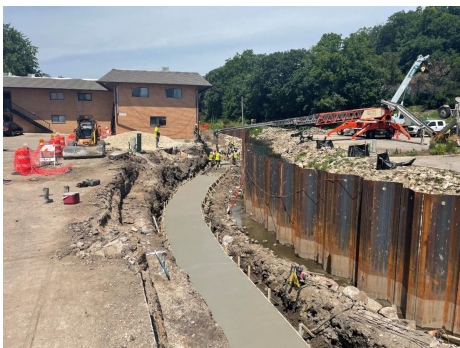




Construction Update - July 30, 2022

This week, the contractor poured the concrete footing and began installation of the Redi Rock Wall on the south side of Crystal Creek. The Redi Rock system features precast blocks that can weigh more than a ton each to form integrated wall solutions. These walls are incredibly durable, offering a longer, maintenance free retaining wall system within Crystal Creek. ComEd was also on site this week and removed the existing aerial cable on the Harrison Street bridge.

Next week, crews plan to complete the Redi Rock Wall on the south side of Crystal Creek. AT&T and Comcast will also remove their overhead aerial cables and utility poles on the Harrison Street bridge.



Concrete Footing



Redi Rock Wall



Aerial Utility Work

WHAT ARE *Cofferdams*?

cof·fer·dam

/ˈkɒfər,dam

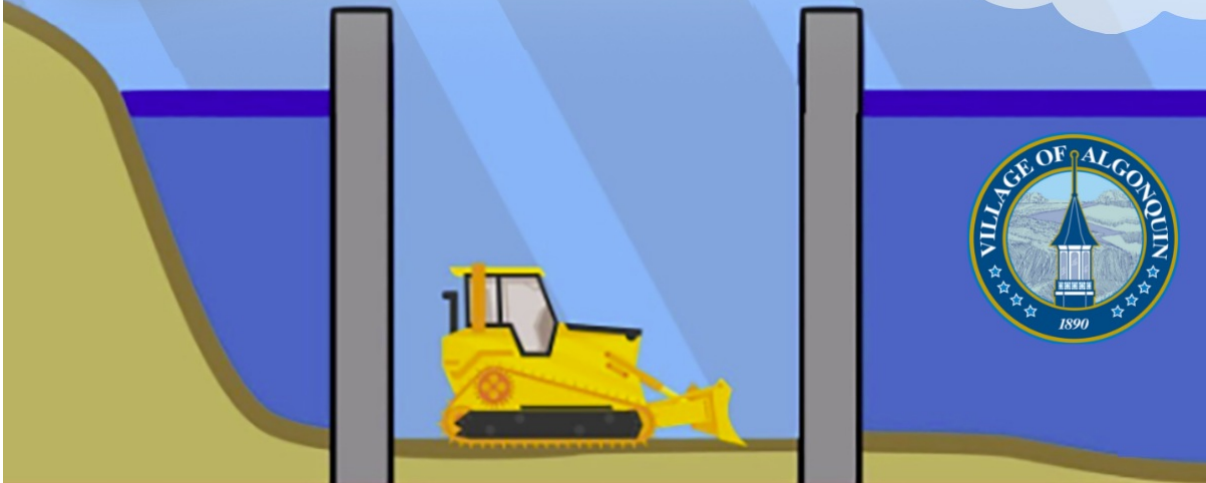
a watertight enclosure pumped dry to permit construction work below the waterline, as when building bridges



COFFERDAMS CREATE DRY
CONSTRUCTION WORK AREAS



COFFERDAM BUILT AT
MAIN STREET



Stage 1

WINTER 2021 - SUMMER 2022

Harrison Street Bridge Reconstruction
Riverwalk Construction & Parking
Crystal Creek Improvements
Historic Village Hall Parking Lot Reconstruction

Stage 2

SPRING 2022 - FALL 2022

20 W. Washington Street Parking Lot Construction

Stage 3

SPRING 2023 - FALL/WINTER 2023

Washington Street Streetscape
Harrison Street Streetscape
Harrison Street Utility Undergrounding
Downtown Streets Resurfacing

Stage 4

FALL 2023 - SPRING 2024

Village Parking Lot Resurfacing

Stage 5

FALL 2023 - SPRING 2024

Downtown Parking Concept Plan



Sign up for
Email Updates

